



GOOD MORNING
Have Good Trading Day

FRIDAY



Price is what you pay.
Value is what you get.

- Warren Buffet



MARKET PULSE

INDIAN INDICES

NAME	CMP	NET CH.	%
SENSEX	25841	+359	+1.41
NIFTY	7842	+110	+1.43

INDIAN ADR'S

SYMBOL	CLOSE	GAIN/ LOSS %
DRREDDY	50.51	-1.83
HDFCBANK	58.10	+0.29
ICICIBK	8.07	+0.88
INFY	16.29	1.12
TATAMOTOR	30.72	+0.20
WIPRO	11.96	+1.79

FII AND MF ACTIVITY

SYMBOL	In Crs.
FIIs Eq (Provisional)	-343.18
FIIs Index Future	23.00
FIIs Index Options	2480.90
FIIs Stock Future	389.61
FIIs Stock Options	-55.26
DII's Eq (Provisional)	233.82

CURRENCY

RBI RATE	19-NOV-2015
RUPEE - \$	66.1105
EURO	70.7779
YEN 100	53.6200
GBP	101.0301

MARKET PULSE

GLOBAL INDICES

NAME	CMP	NET CH.	%
DOW	17732	-4	-0.02
NASDAQ	5073	-1	-0.03
NIKKEI	19755	-103	-0.52
HANG SENG	22480	+291	+1.31
SGX NIFTY	7843	-13	-0.17

WORLD COMMODITIES

FUTURE	U\$\$	CHANGES
CRUDE	41.98	+0.26
NATURAL GAS	2.411	-0.001
GOLD	1083.1	+5.2
SILVER	14.265	+0.043
COPPER	2.0705	-0.0060

WORLD EVENTS

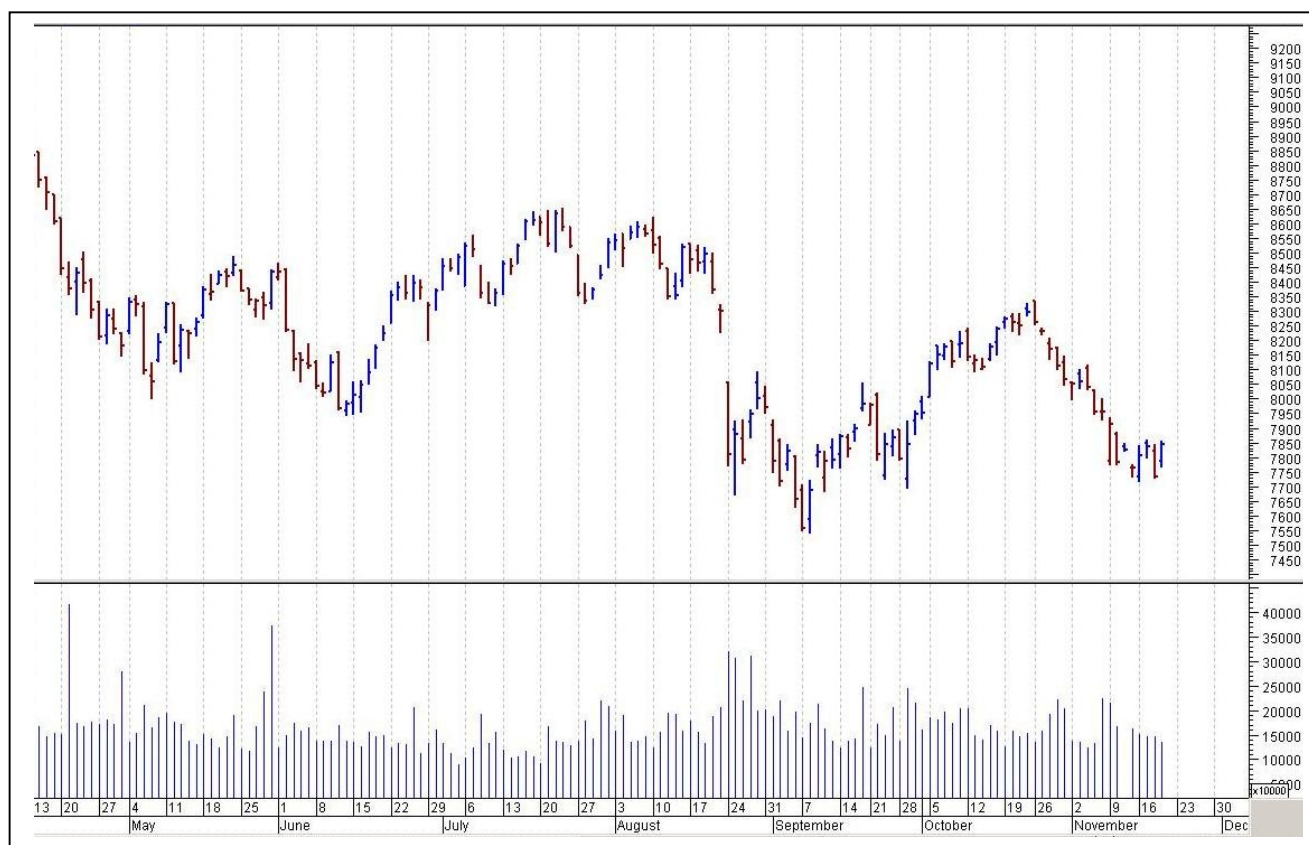
- US:FOMC Member Dudley Speaks
- UK:Public Sector Net Borrowing

TOP STORY

- SSG Capital steps in to buy out Amtek Auto debentures owned by JP Morgan AMC (ET)
- RBI Says Prior Permission Required To Obtain Over 5% Shares/Bonds In Private Banks
- Dr Reddy's Labs sues AstraZeneca in US alleging agreement breach over Nexium (ET)
- Hindalco, Birla Carbon to raise \$2.4bn via bonds (BS)
- PTC India Financial Services Signs MoU With India Infra Finance Co To Provide Financing For Infra Projects
- Domino's Pizza India Announces Technology Partnership With Zippr
- Ruchi Soya To Invest `350 Cr In Karnataka In Agriculture & Energy Sectors
- Kanorias of SREI to mediate possible one time settlement between beleaguered Vijay Mallaya and consortium of lenders to defunct KFA (Tol)
- CCI Gives Clean Chit To JSPL On Allegations Of Cartelisation: Sources



NIFTY CHART



MARKET COMMENTARY

Indian equity markets closed with significant gains in Thursday's trade. The sentiments were on optimistic note with Chief Economic Adviser Arvind Subramanian's statement that inflation is completely under control and it is well within the target of the Reserve Bank. The sentiments also got some support after the rupee recovered against the dollar in early trade at the Interbank Foreign Exchange on increased selling of the US currency by exporters and banks amid higher opening in the domestic equity market. Traders were seen piling position in Bankex, Oil & Gas and Consumer Durables stocks. For today's trade Nifty likely to trade in the range between 7860 – 7895 in the upper side and 7810 -7760 in the lower side.

MARKET LEVELS

	CMP	SUPPORT LEVELS				RESISTANCE LEVELS			
NIFTY	7842	7810	7760	7740	7710	7860	7895	7915	7950
USDINR	66.26	66.1	66.05	66.95	66.8	66.35	66.4	66.55	66.6



FUTURES CORNER

SCRIPS	CLOSE	SUPPORT	TARGET		REMARKS
		STOP LOSS	T1	T2	
TATACOMM	423.7	421	427	432	TRADING CALL
JUSTDIAL	798.95	791	812	822	TRADING CALL
BEL	1246.05	1236	1258	1272	TRADING CALL

EQUITY CORNER

SCRIPS	CLOSE	SUPPORT	TARGET		REMARKS
		STOP LOSS	T1	T2	
JETAIRWAYS	449.25	444	458	462	TRADING CALL
NITCO	36.15	35	39	42	TRADING CALL

DELIVERY BASED CALL / INVESTMENT CALL

SCRIPS	CMP	SUPPORT	TARGET		REMARK
		STOP LOSS	T1	T2	

BULK DEALS (BSE)

SCRIP	CLIENT NAME	BUY/SELL	QUANTITY	PRICE
MBECL	EDELWEISS MUTUAL FUND	B	256,105	95.16
MBECL	SUNDARAM BNP PARIBAS MUTUAL FUND	S	700,000	95.16

BULK DEALS (NSE)

SCRIP	CLIENT NAME	BUY/SELL	QUANTITY	PRICE
MBECL	EDELWEISS MUTUAL FUND - EDELWEISS ABSOLUTE RET EQ FUND	BUY	296007	95.14
MBECL	SUNDRAM BNP PARIBAS MUTUAL FUND	SELL	300000	95.18

SCRIP'S IN F&O BAN

(To resume for normal trading below 80% of market wide limit required)

JINDALSTEL, DLF



NIFTY 50 STOCKS: SUPPORT & RESISTANCE						
Symbol	Close	Support 1	Support 2	Pivot Point	Resistance1	Resistance2
ACC	1332.85	1326.20	1319.55	1335.05	1341.70	1350.55
ADANI PORTS	270.75	266.90	263.05	269.20	273.05	275.35
AMBUJACEM	198.05	195.90	193.75	197.45	199.60	201.15
ASIANPAINT	823.70	817.27	810.83	825.53	831.97	840.23
AXISBANK	463.05	459.43	455.82	463.72	467.33	471.62
BAJAJ-AUTO	2428.25	2378.80	2329.35	2410.45	2459.90	2491.55
BANKBARODA	168.10	166.52	164.93	168.28	169.87	171.63
BHARTIARTL	339.55	334.17	328.78	337.58	342.97	346.38
BHEL	175.80	174.27	172.73	175.33	176.87	177.93
BOSCHLTD	19200.00	19059.35	18918.70	19221.80	19362.45	19524.90
BPCL	907.40	891.93	876.47	900.97	916.43	925.47
CAIRN	135.95	133.97	131.98	136.98	138.97	141.98
CIPLA	635.65	631.20	626.75	634.30	638.75	641.85
COALINDIA	333.70	330.27	326.83	333.48	336.92	340.13
DRREDDY	3281.10	3144.30	3007.50	3274.65	3411.45	3541.80
GAIL	317.90	308.27	298.63	313.93	323.57	329.23
GRASIM	3665.35	3624.90	3584.45	3652.45	3692.90	3720.45
HCLTECH	873.95	854.38	834.82	865.62	885.18	896.42
HDFC	1214.20	1193.47	1172.73	1205.23	1225.97	1237.73
HDFCBANK	1068.90	1055.35	1041.80	1063.15	1076.70	1084.50
HEROMOTOCO	2589.70	2552.83	2515.97	2618.32	2655.18	2720.67
HINDALCO	78.40	76.23	74.07	77.57	79.73	81.07
HINDUNILVR	794.60	790.65	786.70	796.25	800.20	805.80
ICICIBANK	266.40	263.33	260.27	265.67	268.73	271.07
IDEA	133.40	131.18	128.97	133.92	136.13	138.87
INDUSINDBK	914.15	904.08	894.02	910.72	920.78	927.42
INFY	1047.80	1030.40	1013.00	1041.20	1058.60	1069.40
ITC	352.05	349.57	347.08	351.28	353.77	355.48
KOTAKBANK	682.10	673.43	664.77	678.72	687.38	692.67
LT	1358.95	1351.03	1343.12	1358.02	1365.93	1372.92
LUPIN	1807.55	1771.43	1735.32	1795.72	1831.83	1856.12
M&M	1292.10	1278.85	1265.60	1288.40	1301.65	1311.20
MARUTI	4650.35	4593.77	4537.18	4627.63	4684.22	4718.08
NTPC	133.95	132.45	130.95	133.50	135.00	136.05
ONGC	233.00	230.27	227.53	231.98	234.72	236.43
PNB	139.15	137.50	135.85	138.55	140.20	141.25
POWERGRID	131.85	130.63	129.42	131.67	132.88	133.92
RELIANCE	934.75	921.77	908.78	930.23	943.22	951.68
SBIN	243.90	235.73	228.47	240.27	247.53	252.07
SUNPHARMA	742.50	795.18	786.97	808.77	816.98	830.57
TATAMOTORS	406.95	390.97	385.78	397.68	402.87	409.58
TATAPOWER	66.75	66.22	65.68	66.58	67.12	67.48
TATASTEEL	228.75	226.33	223.92	228.02	230.43	232.12
TCS	2362.55	2349.17	2335.78	2365.38	2378.77	2394.98
TECHM	534.40	524.33	514.27	530.07	540.13	545.87
ULTRACEMCO	2754.20	2697.27	2601.18	2871.08	2967.17	3140.98
VEDL	91.65	88.93	84.22	92.02	96.73	99.82
WIPRO	556.75	552.27	547.78	557.13	561.62	566.48
YESBANK	733.40	747.73	737.02	760.72	771.43	784.42
ZEEL	391.40	383.45	375.50	387.95	395.90	400.40



CORPORATE ACTION / BOARD MEETINGS

NSE Download Ref.No.:NSE/SURV/31093:- IDFC Bank Limited- SYMBOL - (IDFCBANK) shall be transferred from trade for trade segment (series: BE) to rolling segment (series: EQ) with effect from November 23, 2015(Monday)

NSE Download Ref.No.:NSE/CML/31142:- Suspension of trading in equity shares - Simbhaoli Sugars Limited due to Scheme of Amalgamation with Simbhaoli Spirits Limited wef November 24, 2015

BOARD MEETINGS

COMPANY NAME	DATE	PURPOSE	RS. PER SH.
DCM	20-Nov-15	DIVIDEND	1.5
CELESTIAL	23-Nov-15	Annual General Meeting	
TAKE	23-Nov-15	DIVIDEND	0.3
MANAPPURAM	24-Nov-15	DIVIDEND	0.45
AVANTIFEED	26-Nov-15	Face Value Split From Rs 10 To Rs 2	
INDIACEM	27-Nov-15	Annual General Meeting	
JAMNAAUTO	3-Dec-15	Face Value Split From Rs 10 To Rs 5	
KESORAMIND	3-Dec-15	Annual General Meeting	
BINANIIND	9-Dec-15	Annual General Meeting/ Dividend	3
JKIL	10-Dec-15	Face Value Split From Rs 10 To Rs 5	
SADBHIN	17-Dec-15	Annual General Meeting	
ENTEGR	21-Dec-15	Annual General Meeting	

NEWS & RUMOURS:

- Gold (Spot Dollar) major support = \$1051/\$1027 & Resistance = \$1110/\$1135.
- Crude oil range->\$36 to \$46.
- Dollar Tumbles, Emerging Assets Gain on Fed; U.S. Stocks Mixed: - Maybe the Federal Reserve can pull it off after all -- at least that's what markets are suggesting. Global equities headed for a fourth day of gains, Treasuries rose and the dollar fell the most in a month as investors showed few signs of unease after the U.S. central bank signaled it's likely to raise interest rates next month. European stocks rose to a three-month high, rallying with emerging markets, as the focus turned to the Fed's plan to take a cautious approach to subsequent tightening. U.S. shares fluctuated after rallying 1.6 percent yesterday.
- Saudi Oil Minister Says OPEC with Others to Stabilize Market: - Saudi Arabia is working with other OPEC members and producers from outside the group to stabilize the market, Saudi Oil Minister Ali al-Naimi said. The global economy is going through an unstable period, al-Naimi said. Crude demand is expected to rise by 1 million barrels a day every year in this decade, and the world requires more investments in oil to compensate for declining recovery rates, he said. The recovery rate for the entire world's oil fields is decreasing by about 4 million barrels a day, he said.
- Oil prices slide below \$40 on supply glut woes: - Oil prices reversed earlier gains to trade lower on Thursday, as lingering concerns over a glut in world markets drove down prices.
- Natural gas futures turn higher after weekly storage data: - Natural gas futures turned higher on Thursday, after data showed natural gas supplies fall less than expected last week.

TRENDS & OUTLOOK – DATE: 20- Nov- 2015

PRECIOUS METALS:

COMMDITY (MCX)	S2	S1	PIVOT POINT	R1	R2
GOLD (Dec)	24900	25099	25330	25625	25870
SILVER (Dec)	31555	32800	33900	34999	36300

BASE METALS

COMMDITY (MCX)	S2	S1	PIVOT POINT	R1	R2
COPPER (Nov)	291	297	304	311	316
ZINC (Nov)	94.30	97.20	99.90	102.75	104.90
LEAD (Nov)	100.20	102.40	104.20	107.55	110.10
NICKEL (Nov)	561	576	595	619	639

ENERGY

COMMDITY (MCX)	S2	S1	PIVOT POINT	R1	R2
CRUDE OIL (Nov)	2471	2550	2670	2777	2892
NATURAL GAS (Nov)	144	148	155	161	168

DATE TALKS : TODAY'S ECONOMIC DATA :

FOMC Member Fischer Speaks, CB Leading Index, BOJ Monthly Report, ECB President Draghi Speaks, German Buba President Weidmann Speaks, and Consumer Confidence of EUR, FOMC Member Dudley Speaks.



Registered Office

Indira House, 3rd Floor, 5 Topiwala Lane,
Opp. Lemington Road Police Station, Grant Road (East), Mumbai - 400007.

Corporate Office

'Ramavat House' E-15, Saket Nagar, Indore - 452018 (M.P.)

Customer Care

Tel: +91-731-4097170/ 71/ 72/ 73/ 74 M. +91 93031 72345

Email: customercare@indiratrade.com www.indiratrade.com



INSTITUTIONAL DEALING UNIT

Africa House, 5, Topiwalla Lane, Lamington Road, Mumbai, 400007

Tel: +91 22 30080678 Fax : +91 22 23870767 Email : ie@indiratrade.com

Disclaimer

This report is for private circulation within the Indira Group. This report is strictly confidential and for information of the selected recipient only and may not be altered in any way, transmitted to, copied or distributed, in part or in whole, to any other person or to the media or reproduced in any form. This report should not be construed as an offer or solicitation to buy or sell any securities or any interest in securities. It does not constitute a personal recommendation or take into account the particular investment objectives, financial situations, or any such factor. The information, opinions estimates and forecasts contained here have been obtained from, or are based upon, sources we believe to be reliable, but no representation of warranty, express or implied, is made by us to their accuracy or completeness. Opinions expressed are our current opinions as of the date appearing on this material only and are subject to change without notice.